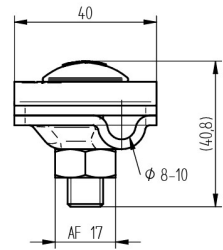




ELIT

Multi-clamp in galvanized steel Ø8-10mm



Universal clamp / multi-clamp in galvanized steel for all types of wire connections Ø8-10mm

Technical description

Original multi-terminal according to DIN EN 62561-1 for universal use as T-, cross-, parallel terminal and splice connector.

Material: Hot-dip galvanized steel.

Clamping range: Ø 8 - 10 mm.

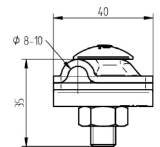
Advantages:

Only one clamp for all types of wire connections

Maximum contact due to even clamping

Extremely shortened installation time - only one M10 screw

Optimal handling during planning, procurement and storage



Product name/ Art.nr/ GTIN	ELIT MKLEM-GALV-ST-Ø810MM/ 40150126/ 7070810032327
According to:	DIN EN62561-1
Type of connector	T-/cross-/parallel connector
Diameter round conductor 1	8 - 10 Millimetre
Diameter round conductor 2	8 - 10 Millimetre
Material	Steel
Surface protection	Hot-dip galvanized
Type of fastening screws	Flat round screw